

RTP70

7.3-Meter Antenna

RTP70 consists of a multi-panel dual reflector 7.3-meter Cassegrain dish with an Az over El pedestal configuration. The pedestal is mounted on a rigid base extension tube suitable for installation on the ground with a metal or concrete foundation. RTP70 is a great tool for Radio and solar astronomers. This antenna can be used for Satellite Tx/Rx applications in any frequency band up to 30GHz.



- **RTP70 INCLUDES:**

- 7.3-meter dual reflector Cassegrain antenna
- Full sky coverage motorized mount with Azimuth over Elevation configuration
- high resolution (0.001°) encoders
- Limit switches safety mechanism
- Rackmount Smart Antenna Control Unit (ACU)
- Waterproof Outdoor Antenna Drive Unit (ADU)
- Remote access control and controlling software
- Fiber optics connection between ACU and ADU
- 100-meter cables
- One year warranty and ten years part supply

• **SPECIFICATION:**

Type	7.3m antenna	
Operating Frequency, GHz	C-Band	Ku-Band
	3.2~6.8	10.5~14.5
Gain, Mid-band, dBi	50	58
Polarization	Dual Linear or Dual Circular	
XPD (on Axis), dB	35	35
XPD across 1dB Beam Width, dB	33	33
VSWR	1.25	1.25
Antenna Noise Temperature	2 or 4 Pol. Port Feed	
10° Elevation	43°K	66°K
30° Elevation	32°K	52°K
50° Elevation	29°K	47°K
-3 dB Beam Width, Mid-band	0.72° (R) 0.47°(T)	0.23° (R) 0.2° (T)
Typical G/T (EL>10°, 2-port)	30dB/°K	36.3dB/°K
Tx Power Capability KW	5	2
Feed Interface	CPR-137G / CPR 229G	WR-75 / WR75
Port Isolation, Tx to Rx dB	90	85

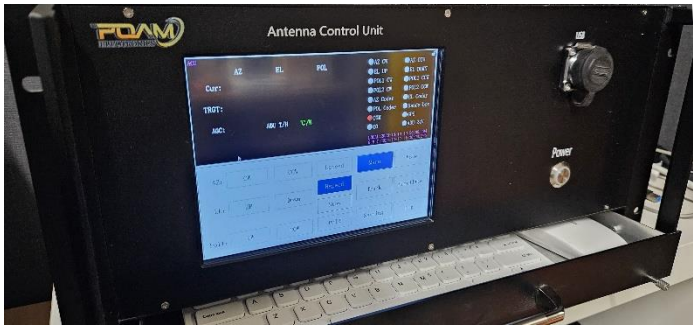
Mechanical Specification

Antenna Diameter		7.3m
Antenna Type		Cassegrain
Surface Accuracy (RMS)		≤0.5mm
Antenna Pointing Range	Azimuth (dual motor technology)	0 to 360° (Continuous) 0° to 90°(Continuous)
Drive Mode		Motorized (AC 3-Phase Motors)
Motor Drive System	Azimuth or Elevation Travel Rate	0. 1°/S to 0.01°/S Variable

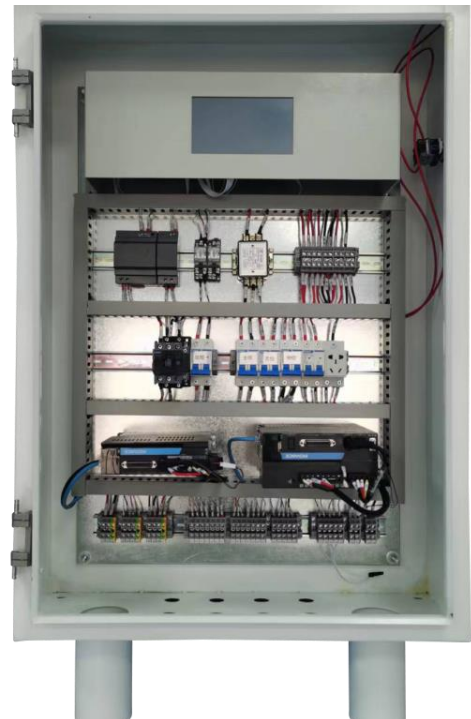
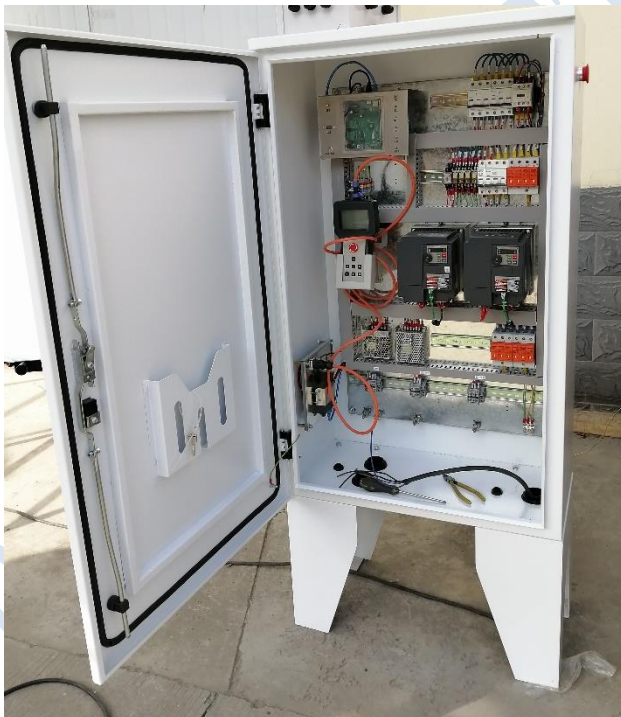
Environmental Specification

Operational Wind	100km/h gusting to 150km/h
Survival Wind	210 km/h
Temperature	-40°~+60°
Relative Humidity	100%
Solar Radiation	1135Kcal/h/m ²
Seismic (Survival)	0.3g(H), 0.15g(V)
Ice Loading	13mm Operational; 30mm Survival

- **SMART ACU:**



- **WATERPROOF OUTDOOR ADU:**



- **ANTENNA DRAWING:**

