



Solid-State Pulsed Power Amplifier, 2700–3100 MHz, 2800 W

PSB2800-V3

POAM's PSB2800-V3 is a rugged, standalone Pulse 2800 W S-band GaN RF power amplifier designed for radar and field-deployed transmitter applications. Operating from 2700 to 3100 MHz, the PSB2800-V3 delivers up to 60 dB of gain with approximately 40% efficiency under rated operating conditions. The amplifier is powered from a single 48 VDC supply and is based on gallium-nitride-on-silicon-carbide (GaN-on-SiC) technology to support wide instantaneous bandwidth, and high-power density.

The PSB2800-V3 is engineered as a compact, lightweight unit with an integrated thermal management structure to support reliable high-power operation. It is built to military-grade standards and housed in a weatherproof enclosure rated to IP66 for demanding outdoor and mobile environments. Both RF input and output ports are fully matched to 50 Ω , enabling straightforward system integration.



Features

- High Power S-Band Pulsed GaN Power Amplifier
- Small Signal Gain 60dB Typical
- Saturation Output Power 2800 W Typical
- Supply Voltage +48VDC
- IP66 Protection
- 50 Ohm Matched Input/Output
- Compact and rugged design 368x190x166 mm (14.5x7.5x6.5 inch)
- low weight 10 kg (22 lbs.)

Typical Applications

- Radar
- Wireless Infrastructure
- Military and Aerospace
- Test Instrumentation
- TR Modules
- TWTA Replacement

ELECTRICAL SPECIFICATIONS

(TEST CONDITION: TA=+25°C, DUTY CYCLE=10%, PULSE= 100US, UNLESS OTHERWISE STATED)

PARAMETER		VALUE	UNIT
Operating Frequency		2700 to 3100	MHz
Saturation Output Power-Pulsed		2600 (Minimum), 2800 (Typical)	W
Input Power (Pulsed)		0 (min), +6 (max)	dBm
Power Gain		60	dB
Gain Flatness		+/- 1	dB
Duty Cycle		5 (Max 10)	%
Pulse Width		100 (Max)	us
Spurious		70 (min)	dBc
Rise/Fall Time [PW=100 us]		100/100	ns
Input/Output VSWR		1.5:1	
Input Impedance		50	Ω (coaxial option)
Power Supply	Voltage	48	VDC
	Current (AVG)	15 (Typical)	A (for Duty Cycle=10% and PW=100us)
MTBF		200,000	Hours (25°C, Ground fixed, duty cycle 10%; per MIL-HDBK-217F)



Solid-State Pulsed Power Amplifier, 2700–3100 MHz, 2800 W

PSB2800-V3

MECHANICAL AND ENVIRONMENTAL SPECIFICATION

PARAMETER	VALUE	NOTE
Operational Temperature	-30°C to +75°C	
Storage Temperature	-40°C to +85°C	
Dimension	368x190x166 mm (14.5x7.5x6.5 inch)	
Weight	10 kg (22 lbs.)	
RF Connectors	N-Type female (Input/Output)	Also Available with SMA input and waveguide output
DC and M&C Connectors	Military Round connectors D38999 Series by AMPHENOL	Mating connectors will be provided
Environmental Protection	IP66	
Cooling method	Heatsink with fans	fans rated IP67
Colour	Anodized Olive Green	Other colours also available

TEST STANDARDS

	PARAMETER	VALUE	NOTE - TEST STANDARD
Vibration	Random Vibration	5Hz to 8Hz @ 6mm, 8Hz to 500Hz @ 15m/s ² , 2 hours in each direction of 3 axes	MIL-STD-202G BS EN 60068-2-6 2008:
	Vibration Shock	Half Sine, 400m/s ² , 11ms. 3 shocks in each direction of 3 axes	BS EN 60068-2-27: 2009: SHOCK
	Bump Test	Half Sine, 250m/s ² , 6ms, 4000 bumps in each direction of 3 axes	BS EN 60068-2-27: 2009:
Thermal	Ambient Temperature Test	14 days	BS EN 60068
	Damp Heat Test	+40°C 93%RH, 16-hour dwell.	BS EN 60068-2-78:
	Temperature Shock	+55°C to -30°C, 3-hour dwells, 10 second transfer, 2 cycles.	BS EN 60068-2-14: 2023:
	Low Temperature Test	-30°C for 16 hours - Operational -40°C for 16 hours - Storage	BS EN 60068-2-1: 2007:
	High Temperature Test	+60°C for 16 hours - Operational +80°C for 16 hours - Storage	BS EN 60068-2-2: 2007:
	Humidity Cycling Test	3-hour ramp +20°C 95%RH to +30°C 95%RH 12-hour dwell +30°C 95%RH 3-hour ramp +30°C 95%RH to +20°C 95%RH 6-hour dwell +20°C 95%RH 24-hour cycle, 14 cycles Functional test performed during the first 2 hours of the +35°C dwell on the 7th and 14th cycles.	BS EN 60068-2-30: 2005:
Drop	Drop Test	Drop height 250mm onto 6 faces. Steel plate backed with concrete	BS EN 60068-2-31: 2008:
	Topple Test	Drop onto wood, 1 drop from each bottom edge, opposite edge lifted to either 45° or 100mm, then allowed to drop back onto bottom face	BS EN 60068-2-31: 2008:
Protection	Ingress Protection, IP6X	Dust tight (with internal pressure reduction)	BS EN 60529:1992+A2:2013
	Driving Rain	200 l/m ² /h for 1 hour	DEF STAN 00-035, PART 3, ISSUE 4, TEST CL 27
	Environmental Protection		MIL-STD-108E



Solid-State Pulsed Power Amplifier, 2700–3100 MHz, 2800 W

PSB2800-V3


Altitude	Altitude	30,000 ft, 30 kPa, 16 hours	MIL-STD-810 method 500
Safety	EMC/EMI	CE102, CS101, CS114, CS115, CS116, CS118, RE102, RS103	MIL-STD-461G

RF CONNECTOR (J1 & J2)

PIN	DESCRIPTION	NOTE
J1 - RF Input	N-Type Female – 50 Ω	Please advise if SMA coaxial interface is required
J2 - RF output	N-Type Female – 50 Ω	Please advise if Waveguide interface is required


M&C CONNECTOR PIN DESCRIPTION (J4-M&C)

[D38999/20WB35SN AMPHENOL CIRCULAR MIL SPEC CONNECTOR]

PIN	DESCRIPTION	NOTE
1	Health and Temperature monitoring	
2		
3		
4	Disable/ Enable Amplifier (on/off)	
5		
6	Ground	
7 to 13	NC	

DC CONNECTORS PIN DESCRIPTION (J3-POWER)

[D38999/20WB98PN AMPHENOL CIRCULAR MIL SPEC CONNECTOR]

PIN	DESCRIPTION	NOTE
A	+ 48 VDC	
B	+ 48 VDC	
C	+ 48 VDC	
D	GND	
E	GND	
F	GND	

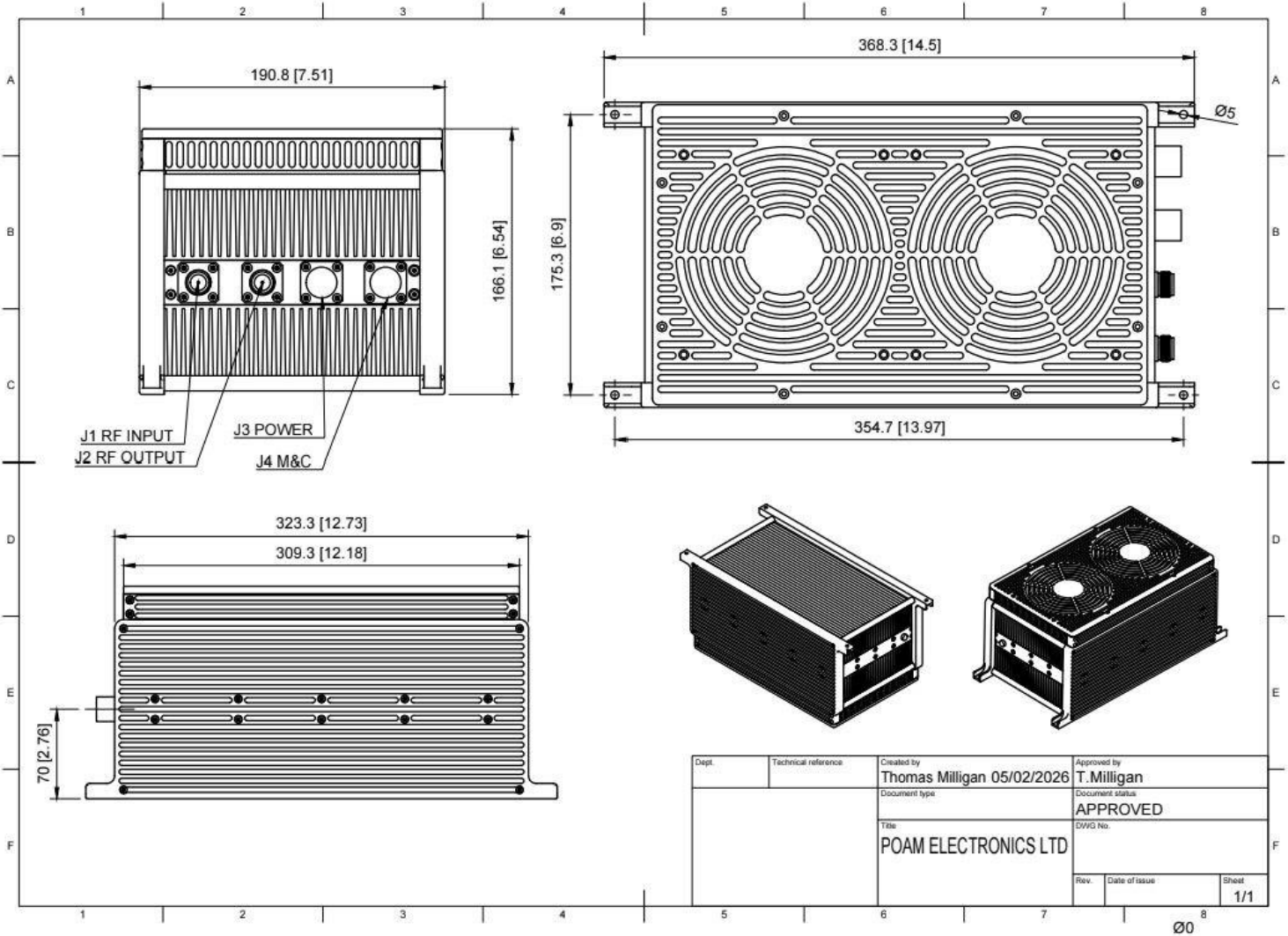


Solid-State Pulsed Power Amplifier, 2700–3100 MHz, 2800 W

PSB2800-V3

OUTLINE DRAWING:

Note: Unit mm [Inches]





Solid-State Pulsed Power Amplifier, 2700–3100 MHz, 2800 W

PSB2800-V3

Handling Precautions



Caution! ESD-Sensitive Device

RF VOLTAGE HAZARD: Contact with RF fields at the output connector can cause burns or electric shock. High levels of RF/Microwave energy may be present when the unit is operating.

HIGH DC CURRENT HAZARD: High levels of DC current are present when the unit is operating.

Each amplifier is shipped in a rigid protective carrying case designed to prevent mechanical damage during handling and transport.



Important Notice

The information contained in this document is believed to be accurate and reliable at the time of publication. However, POAM Electronics Ltd. ("POAM") makes no representations or warranties, express or implied, regarding the accuracy, completeness, or suitability of this information for any application, and assumes no responsibility or liability arising from the use of this information. All information is subject to change without notice. Customers are solely responsible for obtaining and verifying the latest applicable information before placing orders or designing products using POAM devices.

This document does not grant, expressly or by implication, any license or rights under any patent, copyright, trademark, or other intellectual property right of POAM or any third party.

THIS DOCUMENT AND THE INFORMATION CONTAINED HEREIN ARE PROVIDED "AS IS." POAM EXPRESSLY DISCLAIMS ALL WARRANTIES, WHETHER EXPRESS, IMPLIED, OR STATUTORY, INCLUDING, WITHOUT LIMITATION, ANY IMPLIED WARRANTIES OF MERCHANTABILITY, FITNESS FOR A PARTICULAR PURPOSE, NON-INFRINGEMENT, AND TITLE.

POAM solid-state power amplifiers and related products are not designed, intended, or authorized for use as critical components in medical, life-saving, or life-sustaining equipment, or in any safety-critical application in which the failure, malfunction, or misuse of the product could reasonably be expected to result in personal injury, loss of life, or severe property or environmental damage. Such prohibited applications include, but are not limited to, nuclear facilities, aircraft and spacecraft systems, automotive safety systems, and weapons or weapons-control systems, unless specifically approved in writing by POAM.

Customers are solely responsible for compliance with all applicable laws, regulations, and safety standards, including but not limited to those governing RF emissions, human exposure, electromagnetic compatibility, environmental conditions, and export control. The suitability of POAM products for any system-level application must be independently evaluated by the customer.

© 2026 POAM Electronics Ltd. All rights reserved.

POAM is a registered trademark of POAM Electronics Ltd.

Data Sheet Rev. B, Jan. 2026 Subject to change without notice.



www.poamelectronics.com